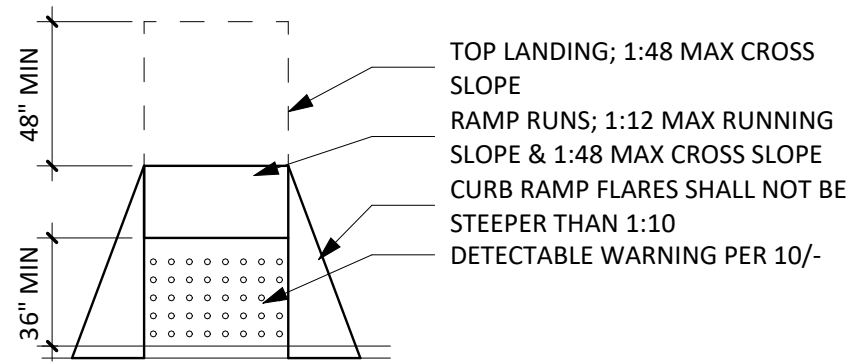


PERPENDICULAR
CBC 11B-406.2

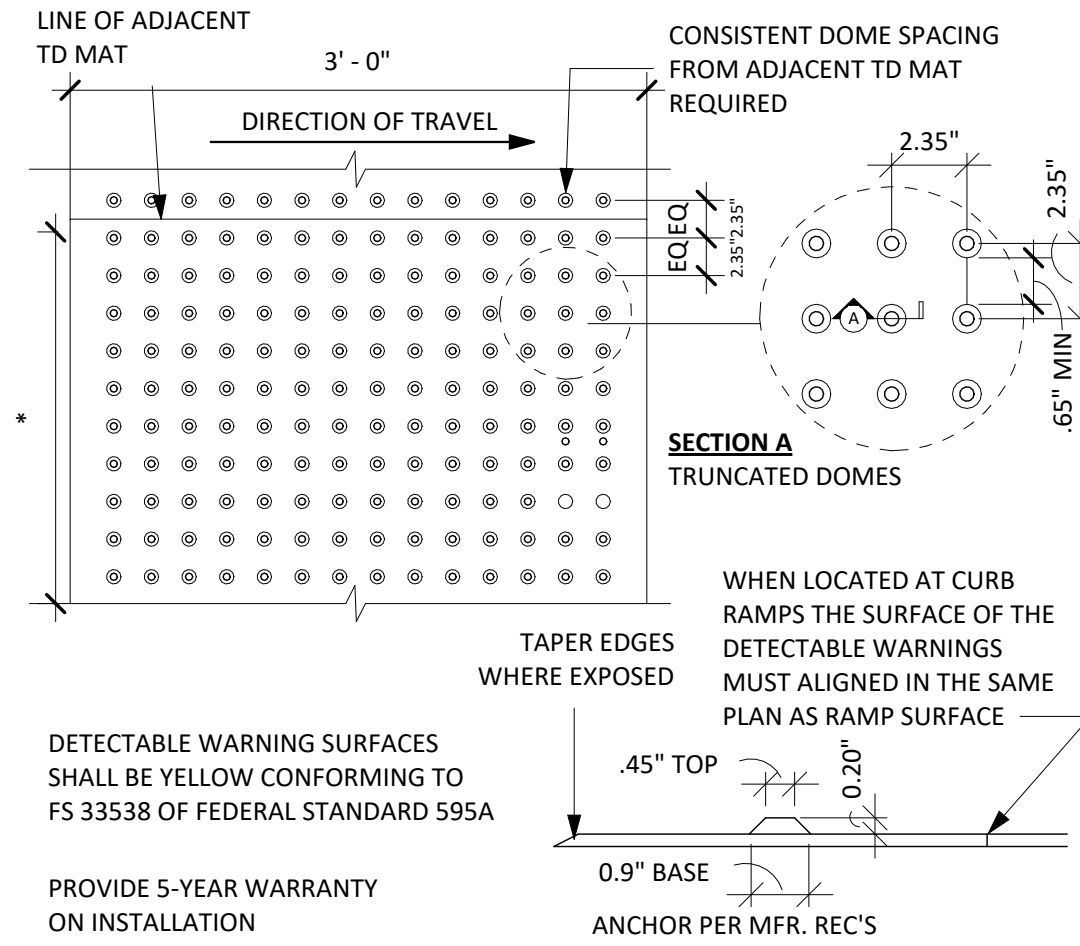
CBC 11B-405, 11B-505



NOTE:
1. TRANSITIONS FROM CURB RAMP TO ADJOINING SURFACES SHALL BE FLUSH AND FREE OF ABRUPT CHANGE, WITH 1:20 MAX COUNTER SLOPE WITHIN 24\"/>

9 CURB CUT (FOR REF)

3/16\"/>

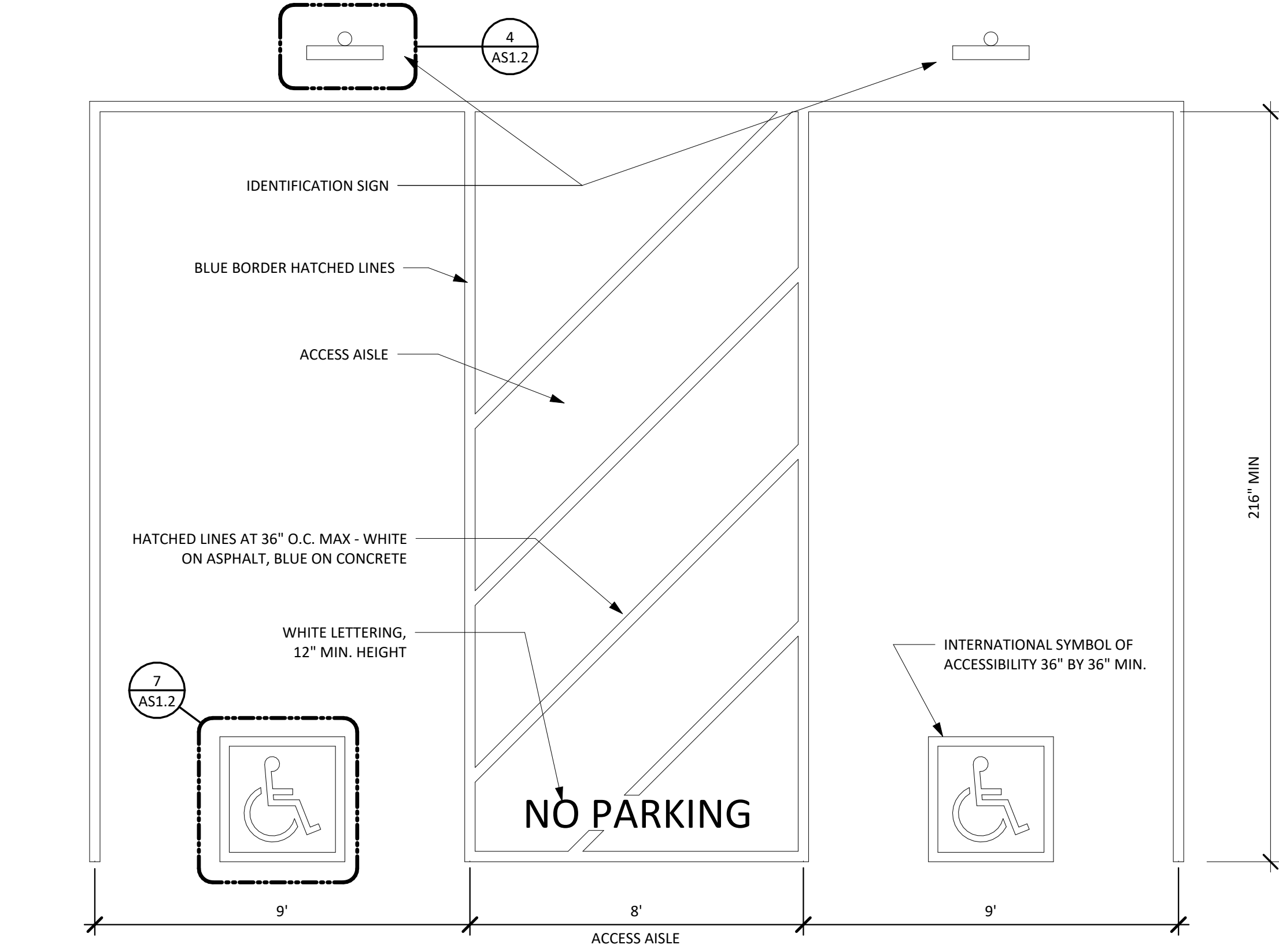


DETECTABLE WARNING SURFACES SHALL BE YELLOW CONFORMING TO FS 33538 OF FEDERAL STANDARD 595A

PROVIDE 5-YEAR WARRANTY ON INSTALLATION

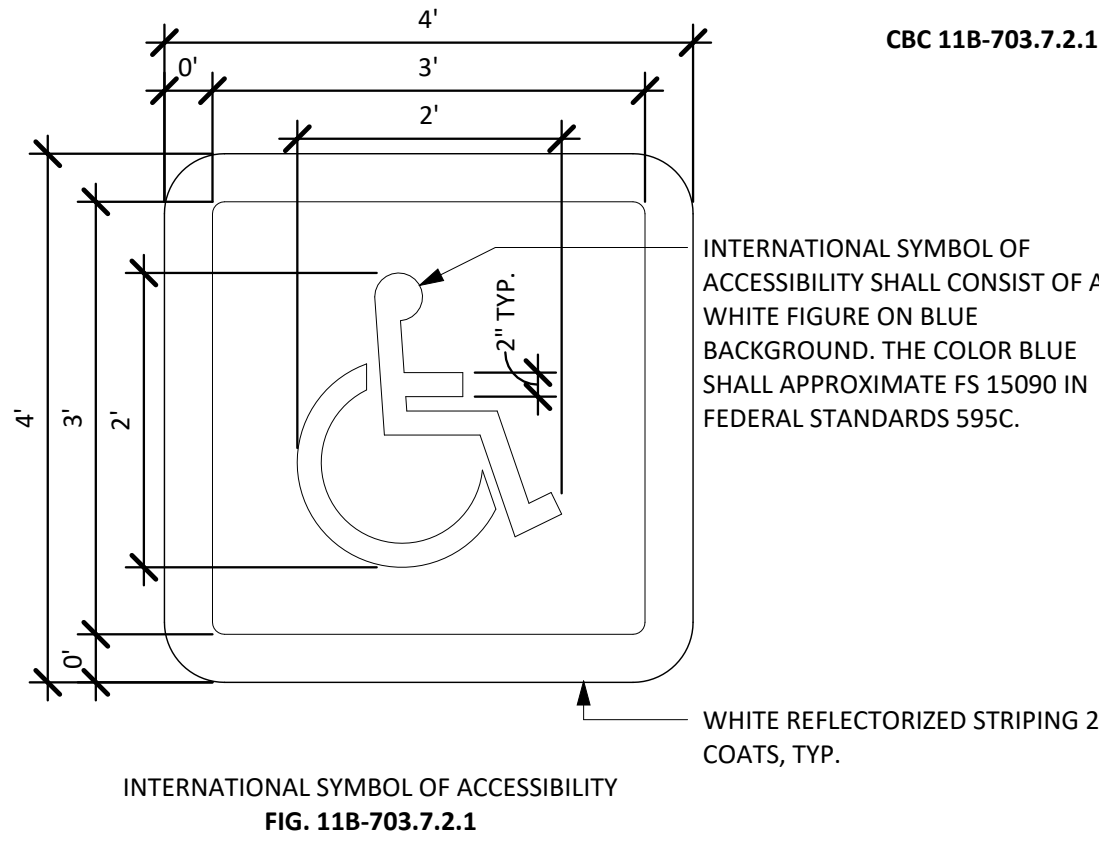
10 ACC DETECTABLE WARNING (FOR REF)

1\"/>



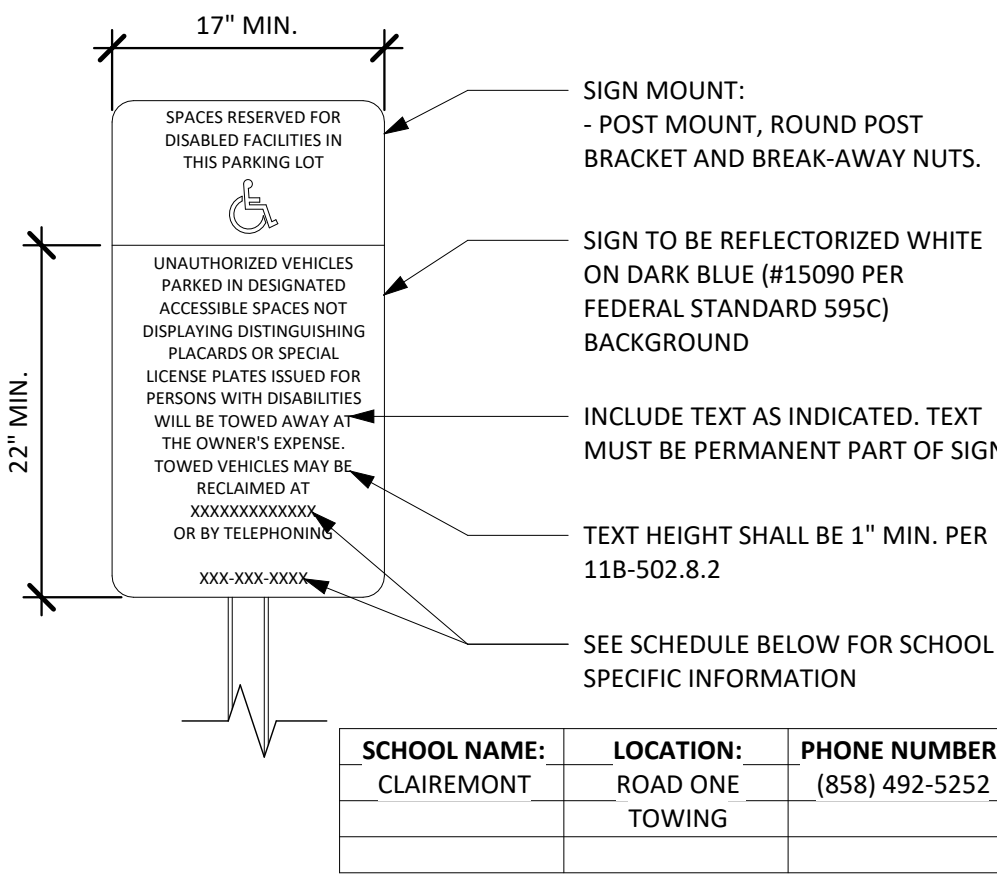
6 TYPICAL ACCESSIBLE PARKING STALL STRIPING (FOR REFERENCE)

3/8\"/>



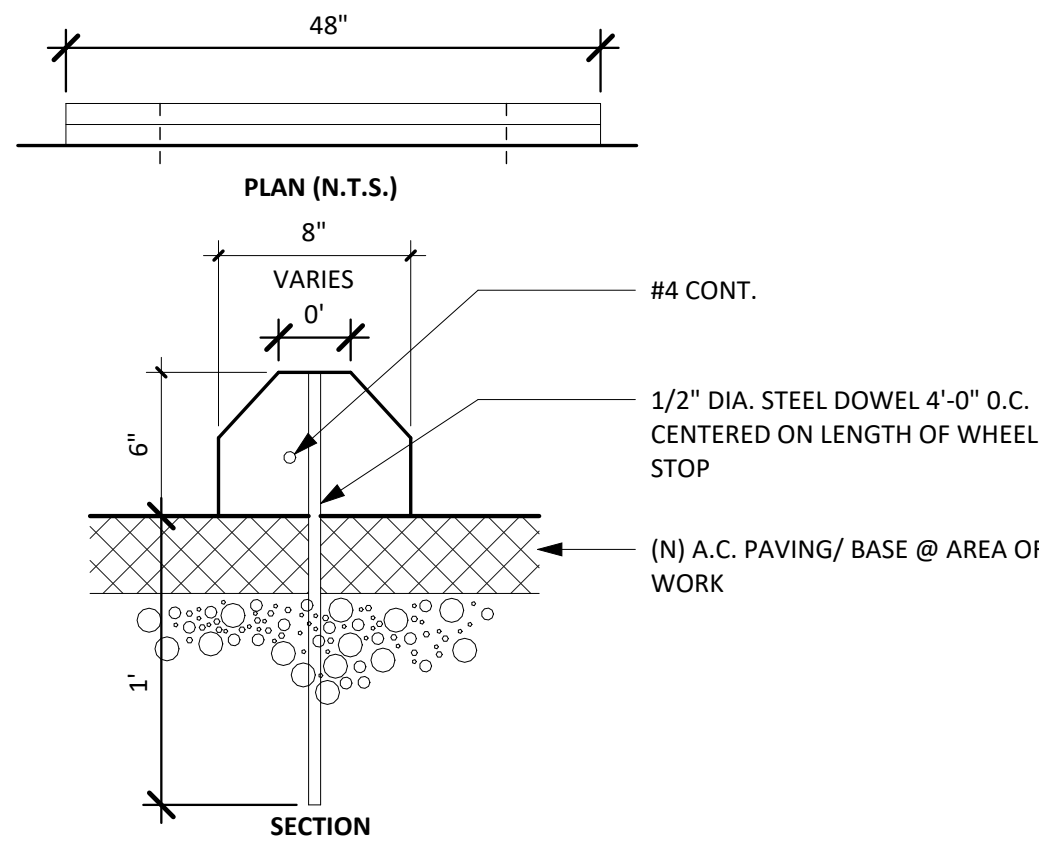
7 ACC PKG ISA SYMBOL (FOR REF)

3/4\"/>



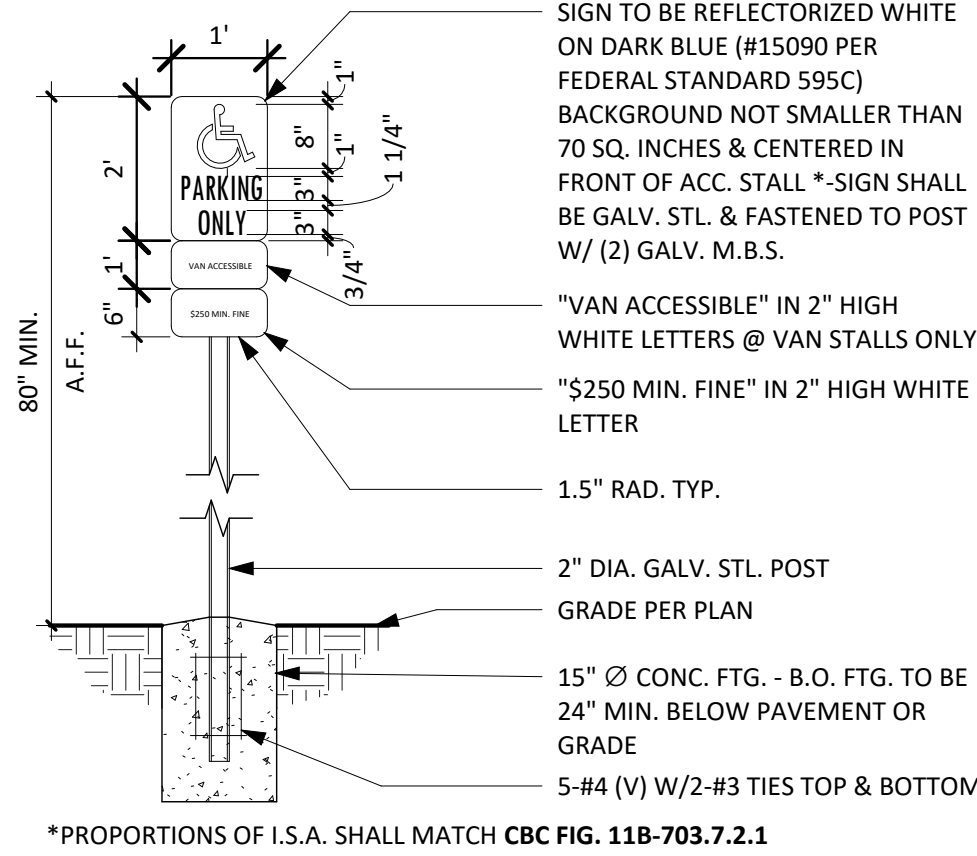
8 ACC PKG TOW-AWAY SIGN (FOR REF)

1\"/>



3 CONCRETE WHEEL STOP (FOR REF)

1 1/2\"/>

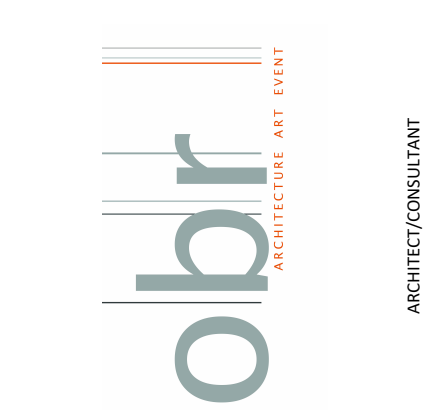
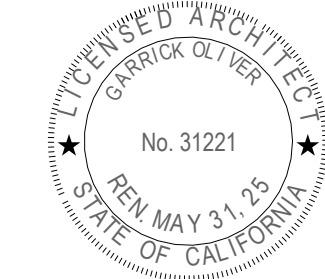


*PROPORTIONS OF I.S.A. SHALL MATCH CBC FIG. 11B-703.7.2.1

4 ACC PKG PAVEMENT SIGNAGE (FOR REF)

1/2\"/>

FOR DSA REVIEW ONLY -
NOT FOR CONSTRUCTION



BOARD OF EDUCATION

PREPARED FOR THE

obdARCHITECTURE

PREPARED BY THE

2419 EL CAJON BLVD., SAN DIEGO, CA 92104

SITE ACCESSIBILITY DETAILS

SAN DIEGO UNIFIED SCHOOL DISTRICT

KITCHEN MODIFICATIONS GROUP 6

CLAIREMONT HIGH SCHOOL

4150 UTE DR, SAN DIEGO, CA 92117

DSA SUBMITTAL SET

PROJECT NO. SDUF-006A
R.S. A.P.

FILE NAME

DATE 02/20/2025

REVISIONS

SHEET NO.

AS1.2